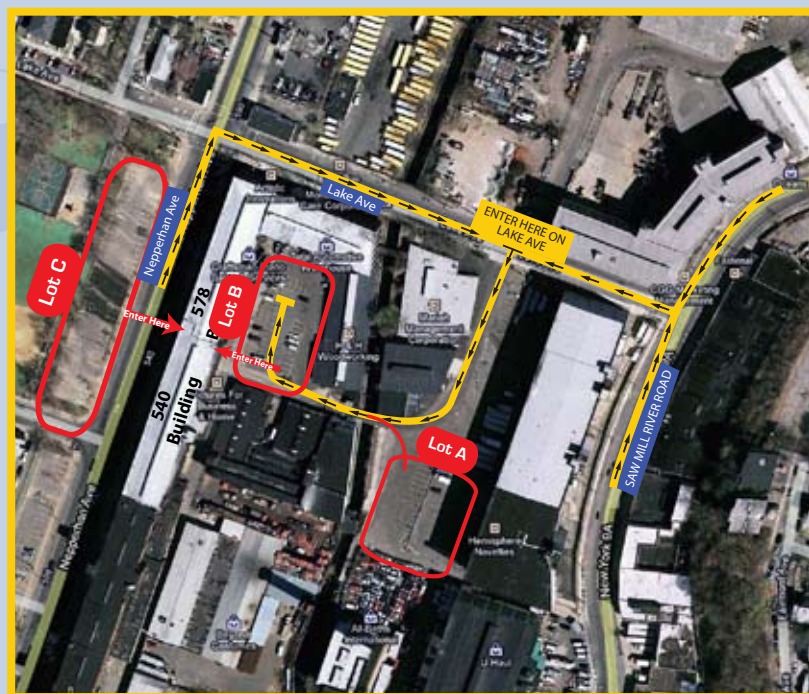


# OPEN STUDIO PARKING & Directions to:

540/578 Nepperhan Avenue, Yonkers, NY

## Coming from the South:

Take the Henry Hudson Parkway North (turns into the Saw Mill North). Take Exit 5 (Yonkers Ave.). Make a right at the end of the ramp onto Yonkers Ave. Make a right at the light onto Ashburton Ave. Go to bottom of hill and make a right at the light onto Nepperhan Avenue. Go three long blocks into the industrial area, past the 2 big blue banners on your right until you reach a light (Lake St. (Dunkin Donuts at corner)) Make a right onto Lake St. and immediately make a right into a parking lot with warehouses. Go slowly and look right (just past the red brick building on your right, about 400 feet in, you'll see a tiny bridge with bright yellow railings leading to our warehouse complex). Make a right and go over the bridge. Straight ahead you will see a large brick warehouse with a sign for Vicky's Place.



**PARKING: Lot C** - You can park here and enter from the main Nepperhan entrance btwn the 2 large blue banners. Please note City parking meters and their rates as they will be in effect on Sat from 9 Am to 6 PM. . You can also park in **Lot B** or **Lot A** and follow the arrow into Bldg 540, the rear lot entrance (elevator access)

## Coming from the North:

Traveling south on the Saw Mill River Parkway, take Exit 6 and make a right onto the unmarked Street, then make a left onto Palmer Avenue. Make a left onto Saw Mill River Rd. At the light make a right onto Lake Ave. and immediately make a left into a parking lot with warehouses. Go slowly and look right (just past the red brick building on your right, about 40 feet in, you'll see a tiny bridge with bright yellow railings leading to our warehouse complex). Make a right and go over the bridge. Straight ahead you will see a large brick warehouse with a sign for Vicky's Place.

## By Train:

On weekends, MetroNorth trains depart Grand Central at 20mins(local) and 51 mins(express) past the hour. Yonkers is on the Hudson Line. Tickets may be purchased from machines across from tracks 32/33. Off Peak tickets are \$5.75 each direction. On the Track Board, the departure time is what to look for (local trains will say Croton Harmon, express trains will say Poughkeepsie). Local trip to Yonkers takes 31 mins. Express trip takes 27 mins. Cabs are always available at the Yonkers Station.

## BeeLine Bus service:

From Getty Square, the Number 5 Bus. (Limited service on Saturdays (every hour) and Sundays (every two hours)). Public Transportation from Bronx: At end of 1 subway line (Broadway & 242nd) Beeline Bus Service 1,2,3 (confirm with driver) to Getty Square, then the No. 5 to 578 Nepperhan. ([www.westchestergov.com/beelinebus](http://www.westchestergov.com/beelinebus))

Please Support  
**YOHO ARTISTS**

**YoHo**  
Artist Studios  
Associated with Great Works Gallery



become a **FAN** on  
**facebook**

**FOLLOW THE ORANGE SIGNAGE TO THE ENTRANCE ONCE YOU ARE WITHIN A BLOCK OF THE BUILDING**